



User Manual

Preliminary inspection



After receiving the product, unpack it, check whether the exterior packaging is not damaged, and whether the information on the product identification plate matches the model you selected. If there is any inconsistency or uncertainty in appearance, specifications and other information, please contact the supplier immediately and explain the cause of the defect. If you have any doubts about the hidden danger of installation, please do not use it.

Warning

The spiral precision decontamination device has a strong magnetic field effect. Always pay attention during installation and maintenance. Do not place magnets on any next to electronic equipment to avoid damage to the electronic equipment.

Product Usage

Separators are installed in heating and cooling systems for increasing system efficiency energy-saving operation. Permanently separate impurities from the system and discharge them reducing system equipment failures and eliminate system noises, reduce the loss of the heating surface and greatly improve the heat conversion and efficiency.



Working diagram



Scaling in pipeline



Magnetic impurity



Scaling in the boiler



Scaling in radiators



Copper spiral mesh
Micron filtration to separate
freeAir, microbubbles and other
non-Magnetic impurities

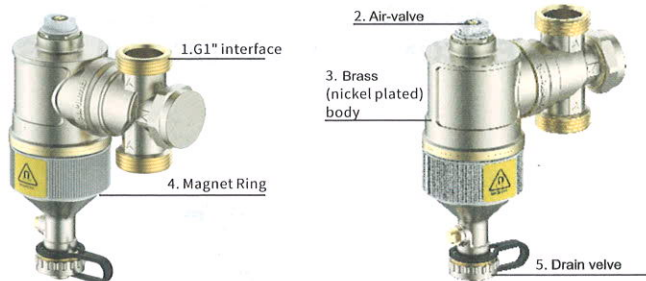


Magnet Design.

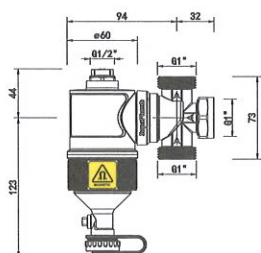
Magnetic impurities in water are affected by strong magnetic field, attracted by the magnetic rod stopping them from entering the inside of the boiler.

Product List

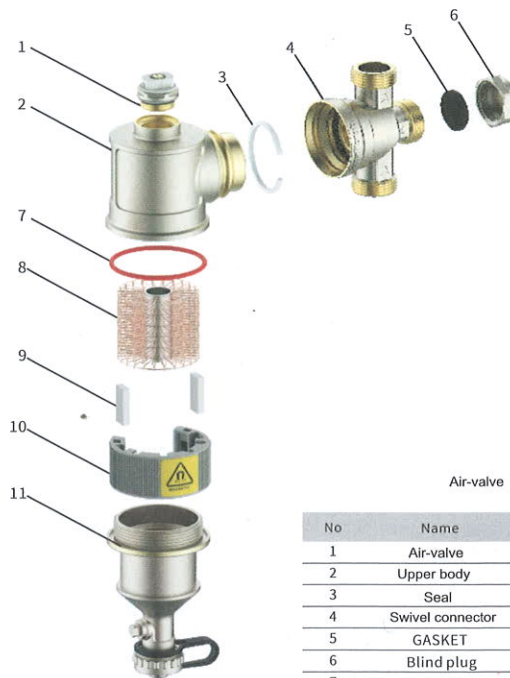
After unpacking, check all parts against the list below.



Technical drawing



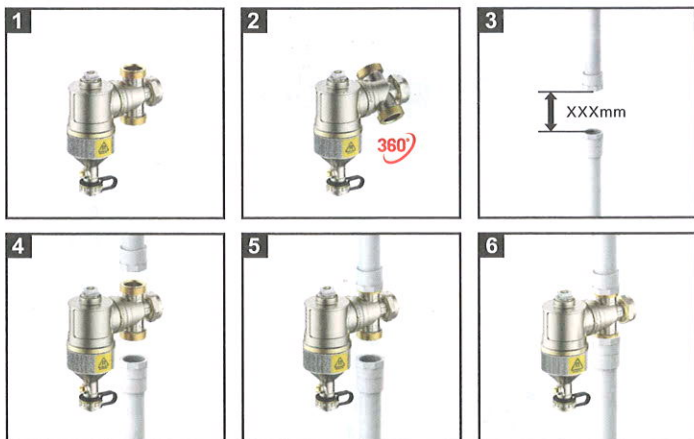
Structure



Air-valve

No	Name	Material	Quantity
1	Air-valve	CnZn42Pb3	1
2	Upper body	CnZn42Pb3	1
3	Seal	—	1
4	Swivel connector	CnZn42Pb3	1
5	GASKET	EPDM	1
6	Blind plug	CnZn42Pb3	1
7	O-ring	NBR	1
8	Filter	Copper	1
9	Magnet	Fe	2
10	Magnet sleeve	—	1
11	Lower body	CnZn42Pb3	1

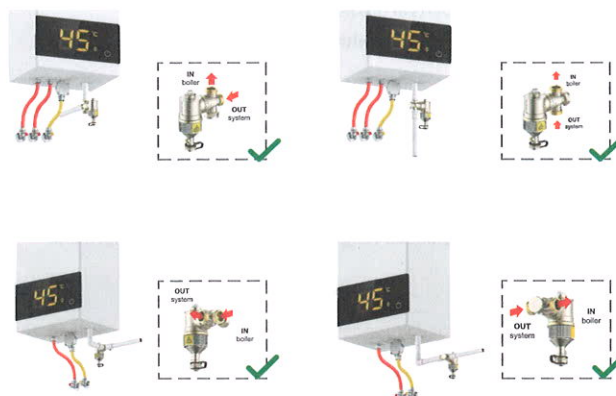
Installation



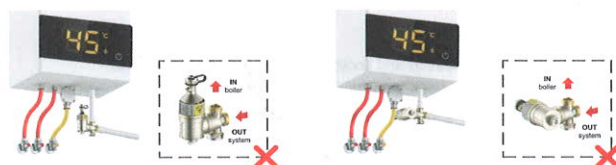
Installation methods

According to different scenarios, this product introduces 4 right different installation methods and 2 wrong installation methods, as shown in the following figure

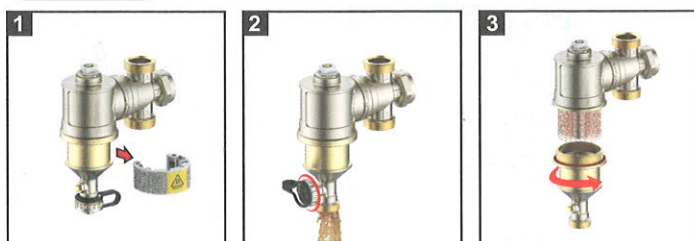
4 ways to install:



2 wrong installations:



Cleaning



1. Turn off the water inlet and pull out the magnet ring.

2. Use the drain valve cover to open the drain ball valve.

3. Unscrew the lower part of the body and remove the copper spiral, rinse and then complete the separator.